

SYN-TOUCH10

WyreStorm[®]

SYNERGY



**SYN-TOUCH10
User Manual**

v1.0

Table of Contents

Introduction	3
Features	3
Package Contents	3
Specifications.....	3
Panel Description	4
Configurating of the Device.....	5
Before Using TOUCH10-A00	5
Creating a Configuration File.....	6
Exporting the Configuration File	10

Introduction

This touchpad is ideal for single-room applications, providing control of the devices in meeting rooms through loaded configuration file.

Features

- Uses imported configuration file to quickly perform control on devices.

Package Contents

- 1 x Touchpad
- 1 x DC 12V Power Adapter (with US, UK, EU & AU Pins)
- 1 x Wall Mounting Kit
- 1 x Desktop Stand

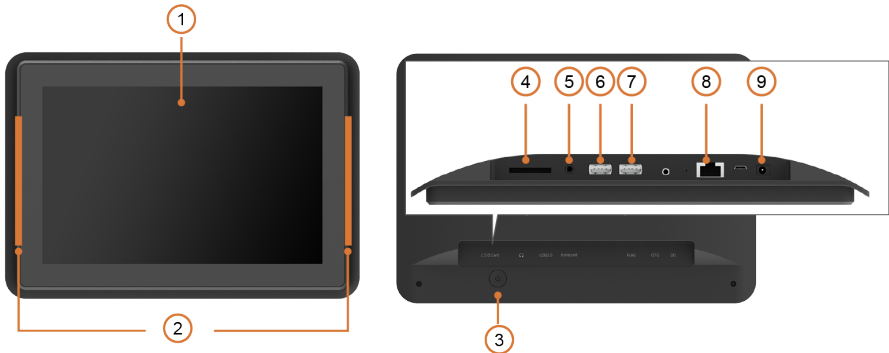
Specifications

Technical	
Input/Output Port	1 x DC 12V, 1 x SD Card Slot, 1 x RJ45, 1 x USB 2.0, 1 x Serial, 1 x Micro USB OTG, 1 x 3.5mm Audio Jack Output
Screen Size	10.1"
Panel Type	IPS
Resolution	Up to 1280 x 800
Interactive Touch	10 Points Capacitive Touch
Brightness	250 cd/m ²
Viewing Angle	85°
Operating System	Android
Supported Controllable Devices	APO-200-UC, APO-210-UC, APO-VX20, SW-510, SW-515, SW-540-TX-W, SW-740-TX, Other third-party devices

General	
Power Supply	DC 12V 1.5A
Dimensions	274mm x 190 mm x 29.8mm/10.79" x 7.48" x 1.17"

General	
(W x H x D)	(desktop stand not included)
Net Weight	0.72kgs/1.59lbs (desktop stand not included)

Panel Description



ID	Name	Description
1	Screen	10.1" LED multi-touch screen.
2	LED	LED color is configurable. Available color options: red/blue/green/yellow/purple/white/cyan.
3	Power	Hold and press this button for at least 2s to power on the device.
4	SD Card	Insert a SD card for loading existed configuration file.
5	Audio Out	3.5mm audio jack output. Connect to an audio receiver such as a headphone.
6	USB 2.0	Connect to a USB flash drive for loading existed configuration file.
7	Serial Port	Connect to RS232 device for serial communication.
8	RJ 45	Connect to Ethernet.
9	DC	Connect to the power adapter provided for DC 12V power input.

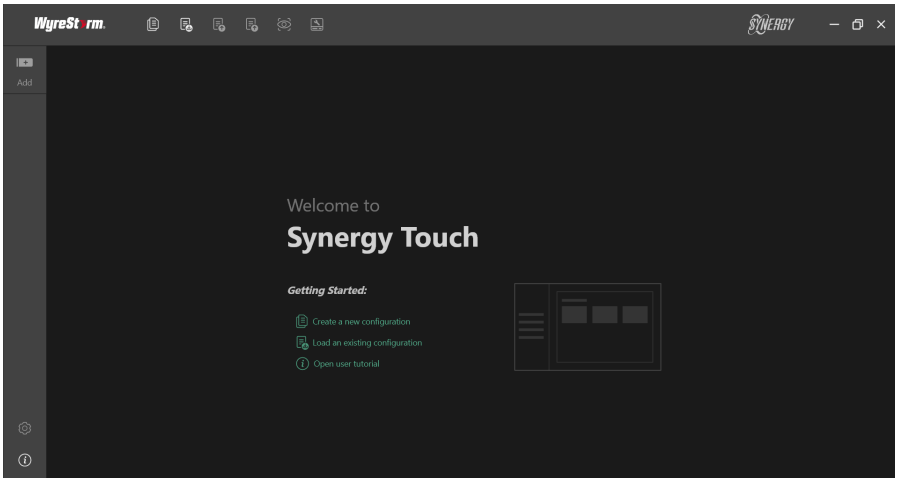
Configurating of the Device






This touchpad is an easy-to-use tool to control AV system in meeting rooms. After quick loading of inserted configuration file, users can access the controlled devices with ease.




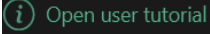
Before Using TOUCH10-A00

Before using TOUCH10-A00, you need to create a new configuration file for the controllable device on your PC.

1. Download **Synergy Touch App** to your PC. Ensure your PC are in the same network segment as the conferencing system.
2. Install and launch Synergy Touch App on your PC. The following welcome screen pops up.




UI Elements	Description
	Click to create a new configuration project.
	Click to load an existing configuration file locally.
	Click to export the configuration project locally.
	Toggle between Edit view and Preview view.
	Click to manage the device that is being controlled in the current configuration project.

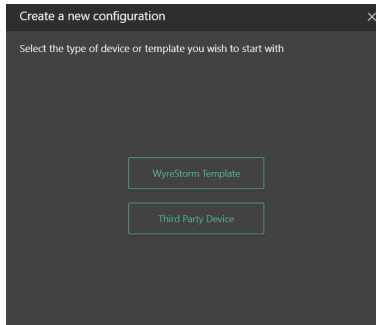
UI Elements	Description
	Click to add a layout or a button for the current configuration project.
	Advanced settings for the current configuration project, such as changing the background image, logo, transparency or theme color, or changing the network for touchpad.
	Displays the software version.
	Click this button to walk you through a series of steps for creating a configuration project.

Creating a Configuration File

To create a new configuration file, perform the following:

1. Start creating a new configuration.

Click create button  to create a new configuration project, and select the type of device you want to control.

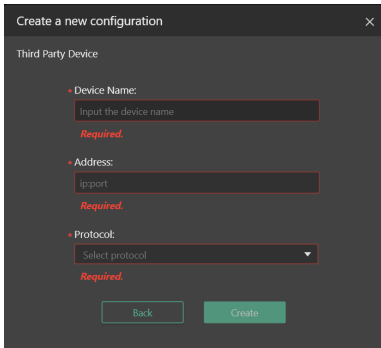


Note: If the target device is one of Wyrestorm products, please select WyreStorm Template, which can be downloaded from Wyrestorm official website; if you want to customize functions for other devices, select Third Party Device.

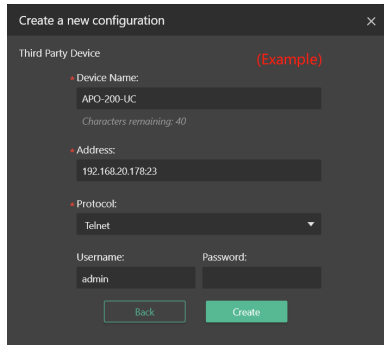
For instructional purpose, the example uses the Third Party Device here.

In the following window, complete the form information, especially the required fields marked with red asterisks, and click


Create, an empty configuration project is created successfully.

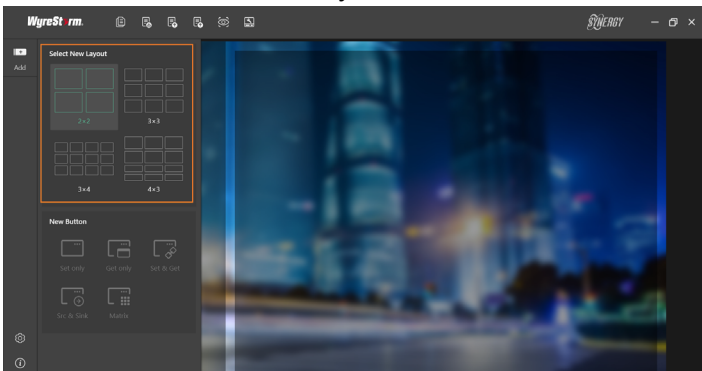


>>

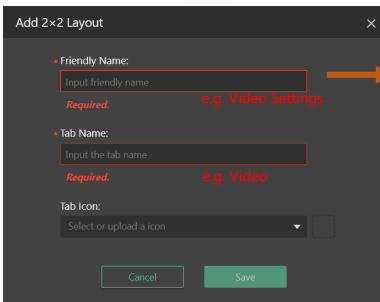


2. Create layout for the device.

Click button  Add to create and select a new layout, then fill in the basic information of the layout.



>>



Friendly Name: The title that appears at the top right of the workspace.

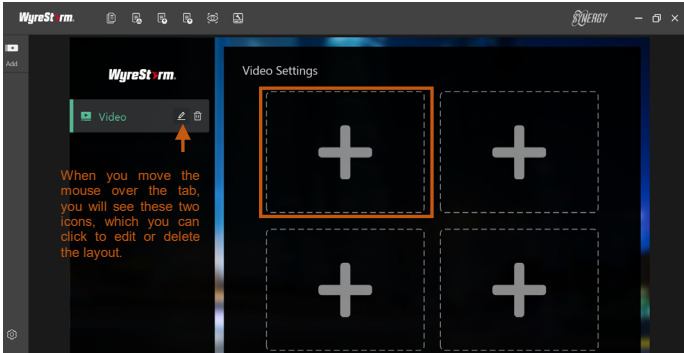
Tab Name: The tab label to be displayed in Layout List.

Tab Icon: Select or upload an icon for the layout tab. If this field is empty, no icon is displayed. If the icon is given a color, the Tab Name will also use that color.

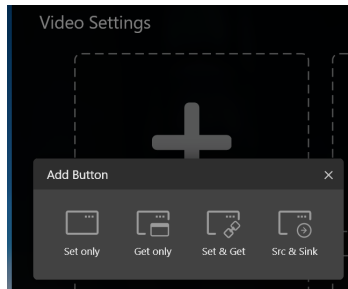
3. Add a new button for the layout.

a) Now the layout just created appears in the layout list, click

any placeholder frame in the workspace to add new button.




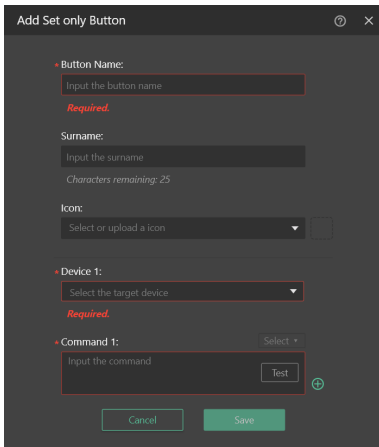
- b) In the dialog box that pops up, select the type of button you desire from the four following options.



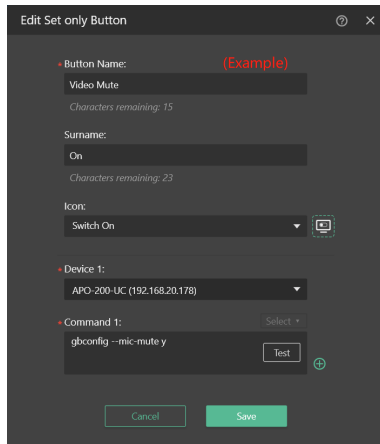
This example uses Set Only button here.

4. Edit button information.

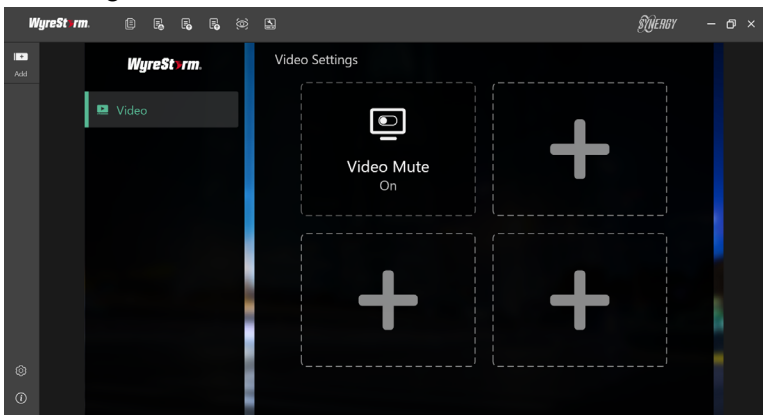
Fill in each form item according to actual functional requirements and specifications, and then click Save button to create a button. For more information about features or rules of the button, click the  button in the upper right corner.




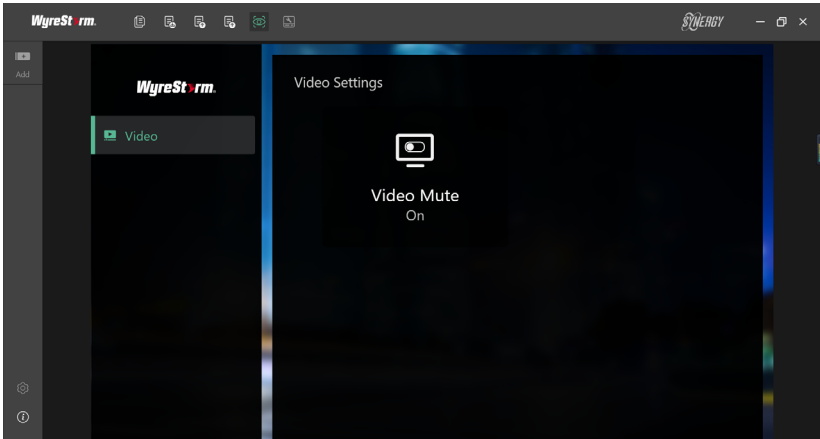
>>



Now the button has been added successfully in the workspace as following.



5. Click  to switch to Preview mode. The displayed screen is what it will actually look like on the touchpad. In preview mode, you can click on each button directly to verify the actual function of them.



Exporting the Configuration File

After you have completed the edit of the configuration project, export it to a file, and copy the file to the root directory of your SD card or USB flash drive into the touchpad and re-launch Synergy Touch. Now you can easily operate and control the target devices on touchpad.

